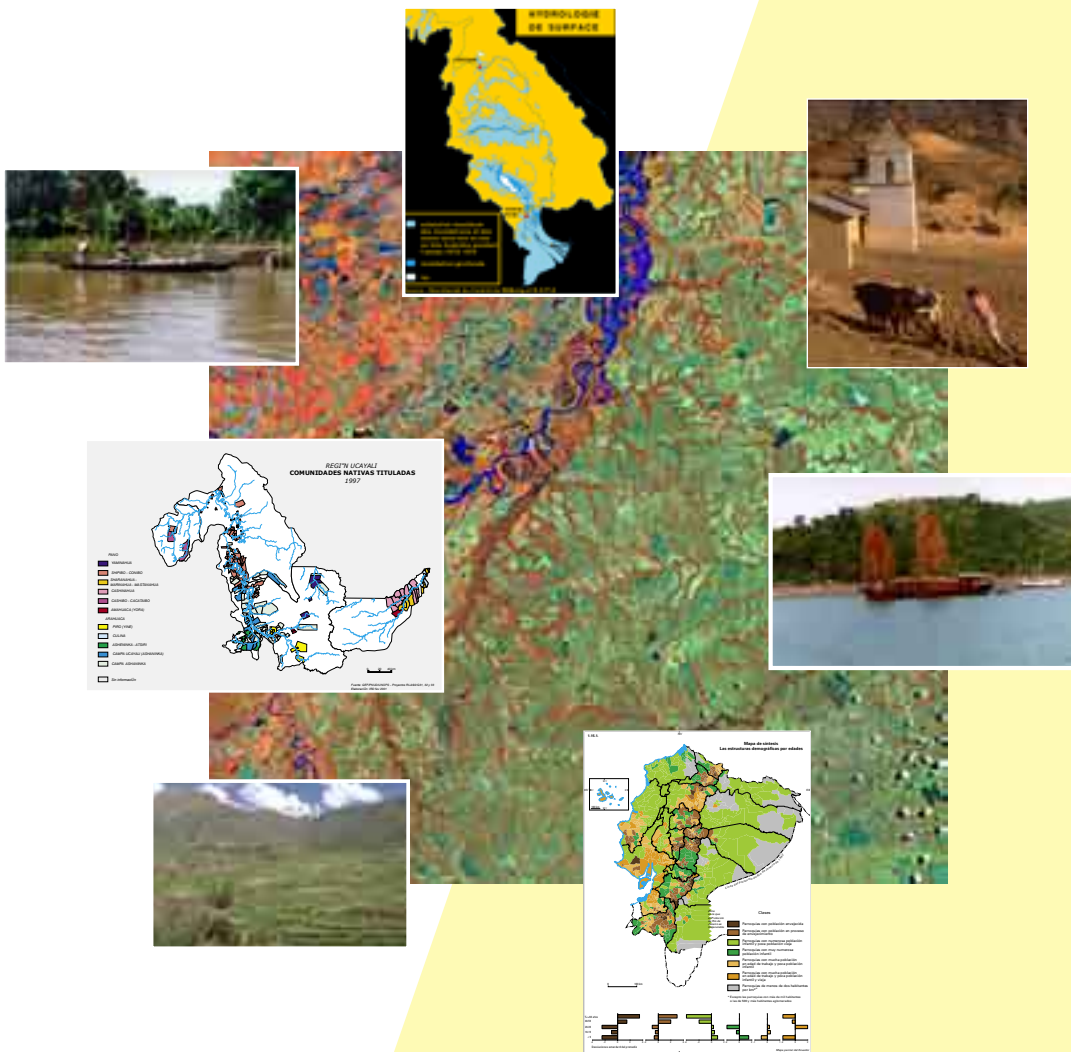


INTEGRATED APPROACH TO REGIONAL DEVELOPMENT

Research Program 2003-2005

AIDeR



INTEGRATED APPROACH TO REGIONAL DEVELOPMENT Research Program 2003-2005

Objective

This program proposes to develop, with a network of partners, a methodological framework for the implementation of an integrated approach to regional development. The objective is to reinforce in-country analysis and organization capacity in order to:

- prevent the generation of social and territorial disparities, by proposing a better coherence of regional organization so as to make local development actions more sustainable;
- take into account the multiple components of the territory (biophysical, socio-economic, political) and the multiple spatial interactions (relation urban-rural, mobility, biodiversity, local-global) in natural resources management;
- realize, with local actors and decision makers, an evaluation and appropriation of the use of spatial analysis methods to improve the knowledge of their territory; and to adjust existing tools for acquisition of spatial knowledge to operational objectives (fight against poverty, food insecurity, strategic planning).

Approach



It is important to underline the fundamental heterogeneity of space and the social construction of territories. Indeed, if policies do not have the same impact everywhere, because the natural conditions and societies are different from place to place, the actions to undertake, in order to promote or accom-

pany social and economic development, must inevitably be distinct and be adapted to places.

However, most development policies leave little room to a spatial dimension, and most development actions are local. The construction of an integrated approach at an intermediate scale is essential to address the complexity and the heterogeneity of situations and to bring coherence to the local actions.

The current process of urban concentration generates an imbalance between centers and peripheries which, associated with the local-global duality of the world economy, puts the territory at the center of the development process. The actions necessary to limit the generation of new spatial disparities, particularly in the rural and peri-urban zones, must be based on territorial specificities to create comparative advantages and new forms of regulation.

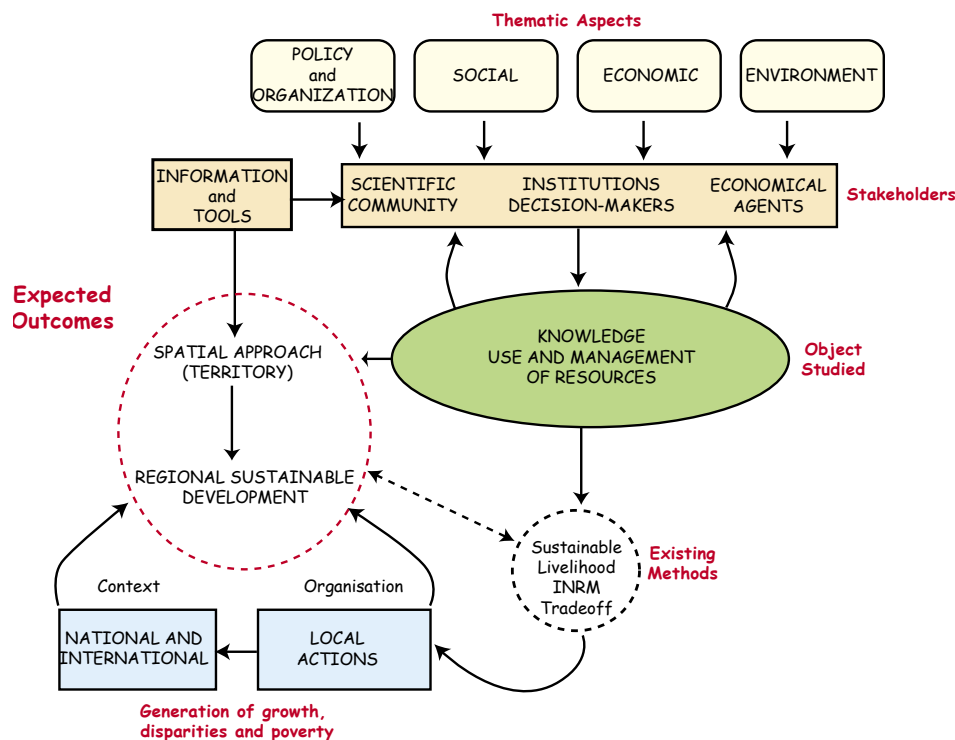
It is the innovation and organization capacity that determines the development potential, by integrating local development initiatives and knowledge



management by economic agents. The valorization and the use of resources can be durable only in one such context.

The approach suggested is based on three principal characteristics:

- It is **multidisciplinary** so as to take into account the multiple uses that societies make of their resources. The thematic aspects addressed make it possible to confront theories and methods developed by scientific teams, master plans and policies defined by institutions, approaches and perceptions of local actors.



- It is definitely **spatial** because it is essential to reposition each site in a more general geographical context, and to highlight the spatial interactions between local entities or between neighboring systems (urban - rural, valley - mountain, forest - pasture, etc.)
- It builds on the experience of institutions having developed methodologies adapted to a local situation (Sustainable Livelihood, INRM, Trade Off, Multi-criteria, etc), and on a **network** of partners directly involved in the design and implementation of the proposed methodological framework.

Study Areas

The priorities of CIAT and IRD lie at the intersection of three components: improvement of natural resources management in an objective of sustainability; fight against poverty and food insecurity; development of comparative methods on the basis of effective partnerships.



The study areas were therefore selected according to three criteria: 1) incidence of poverty; 2) strategic importance of the use of the natural resources; 3) existence of a network of capable researchers and institutions. In addition these areas are included in three economic integration zones at the edge of the large world economic blocks:

- SICA (Central American Integration System) Nicaragua¹, Honduras
- CAN (Community of the Andean Nations) Bolivia, Ecuador, Peru, Colombia
- Countries of the Mekong Basin: Laos, Vietnam.

¹ Priority countries are underlined; for the others, the program will come in support to existing programs

Workplan

The project proposes to structure a network of researchers and engineers from universities, research centers, governmental and non-governmental organizations, which will work in close collaboration on the design of regional development for three main fields:

- ❑ *Social and economic*: based on spatialised statistical data from censuses and surveys;
- ❑ *Environmental*: with the support of spatial methods (GIS and remote sensing) and environmental databases (agricultural censuses, specific information systems, development plans and surveys from national institutions).
- ❑ *Organizational*: based on CIAT experience in participatory approaches, with the collaboration of territorial public institutions and of local and regional development actors.

The stages of the project are:

- ❑ Configuration and activation of the network (in-country and international)
- ❑ Workshops to define the conceptual framework, the strategic issues, and for elaboration of work plans
- ❑ Evaluation and training programs on spatial analysis methods
- ❑ Studies on specific regions, which will be tied on strategic development projects

The expected products are:

- ❑ For each situation, a document on the approaches and perception of regional development, and of a between-site comparative analysis;
- ❑ Specific information systems and related tools;
- ❑ A synthesis on the evaluation of spatial approaches for regional development;
- ❑ Publications in partnership;
- ❑ The formalization of a network of expertise linked to decision-making institutions.

Contacts

Maison de la Télédétection - 500, rue Jean François Breton
34093 - Montpellier Cedex 5 - France
Fax: (33) 467 54 87 00

IRD - US ESPACE
Hubert Mazurek
mazurek@mpl.ird.fr
Tel: (33) 467 54 87 07

Partners

IRD - US ESPACE - «Approche intégrée des milieux et des sociétés».

CIAT - RII - «Rural Innovation Institute»

Partners foreseen:

- ❑ The National Statistics Institutes.
- ❑ Universities and Research centers (North and South)
- ❑ National planning and development Institutes.
- ❑ Local organizations
- ❑ NGOs

Funding

In addition to in-kind resources from collaborating institutions, we count on:

- 1) An annual budget of \$50 000, from CIAT and IRD core resources, for trips, workshops, and direct support of local teams.
- 2) Specific funds of the French government, IRD, CIAT or the CGIAR for the strengthening of local team competencies:
 - ❑ Short term scientific exchange for a specific project or capacity building event;
 - ❑ Research Funds;
 - ❑ Funding for technical and staff support.

Complementary funding will be obtained from development agencies for specific projects and to support the network beyond the end of the program.

CIAT - RII
Nathalie Beaulieu
n.beaulieu@cgiar.org
(33) 467 54 87 11